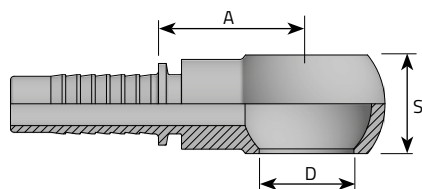


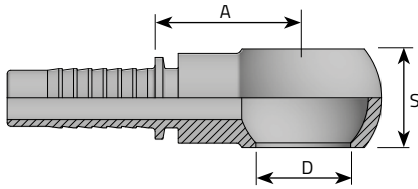
BSP BANJO (1)



OCCHIO BSP
BANJO VIS BSPP
 RINGNIPPEL FÜR HOHLSCHRAUBE BSP/RNR
BANJO BSPP

Code	Tube			Thread	Dimensions			Pressure	
	D.N.	Hose	Diam		D	S	A	Bar	Psi
	Inch	mm	Inch	mm	mm	mm			
OG0302	-3	3/16"	4.8	1/8"	10	10	19.5		
OG0304	-3	3/16"	4.8	1/4"	13.2	14	22.5		
OG0402	-4	1/4"	6.4	1/8"	10	10	24		
OG0404	-4	1/4"	6.4	1/4"	13.2	14	23		
OG0406	-4	1/4"	6.4	3/8"	16.7	17	26.5		
OG0408	-4	1/4"	6.4	1/2"	21	22	32.5		
OG0504	-5	5/16"	7.9	1/4"	13.2	14	24		
OG0506	-5	5/16"	7.9	3/8"	16.7	17	26.5		
OG0508	-5	5/16"	7.9	1/2"	21	22	27.5		
OG0604	-6	3/8"	9.5	1/4"	13.2	14	31.5		
OG0606	-6	3/8"	9.5	3/8"	16.7	17	26.5		
OG0608	-6	3/8"	9.5	1/2"	21	22	27.5		
OG0806	-8	1/2"	12.8	3/8"	16.7	17	31		
OG0808	-8	1/2"	12.8	1/2"	21	22	33		
OG0810	-8	1/2"	12.8	5/8"	23.3	25	32.5		
OG0812	-8	1/2"	12.8	3/4"	26.5	30	34.5		

BSP BANJO (2)



OCCHIO BSP
BANJO VIS BSPP
 RINGNIPPEL FÜR HOHLSCHRAUBE BSP/RNR
BANJO BSPP

Code	Tube		Diam	Thread	Dimensions			Pressure	
	D.N.	Hose			D	S	A	Bar	Psi
		Inch	mm	Inch	mm	mm	mm		
OG1008	-10	5/8"	16	1/2"	21	22	31.5		
OG1010	-10	5/8"	16	5/8"	23.3	25	32.5		
OG1012	-10	5/8"	16	3/4"	26.5	30	34.5		
OG1212	-12	3/4"	19	3/4"	26.5	30	35		
OG1216	-12	3/4"	19	1"	33.4	38	48		
OG1612	-16	1"	25.4	3/4"	-	-	-		
OG1616	-16	1"	25.4	1"	33.4	38	43		
OG2020	-20	1.1/4"	31.8	1.1/4"	42.1	47	57.7		