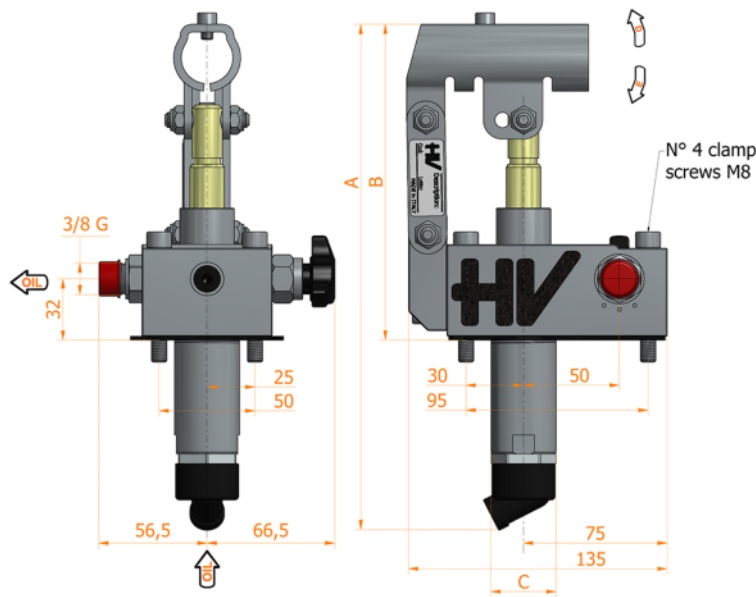
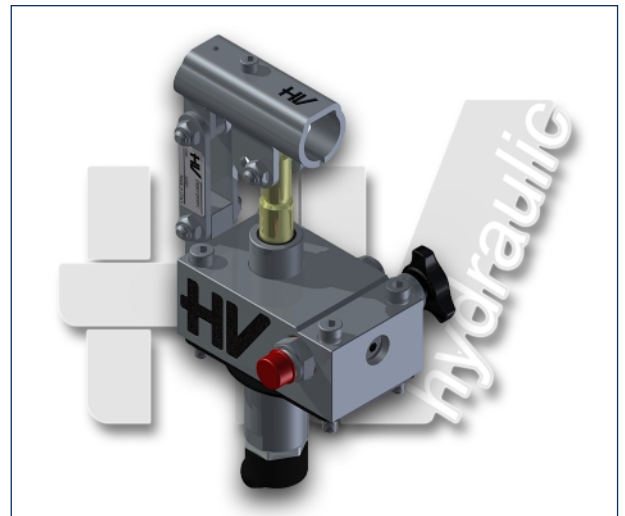
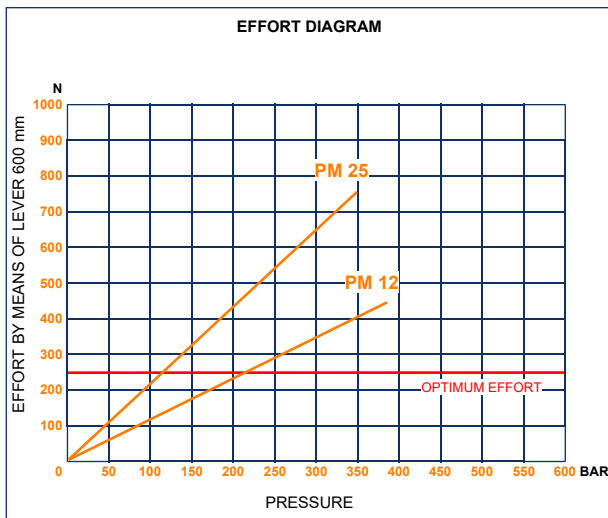
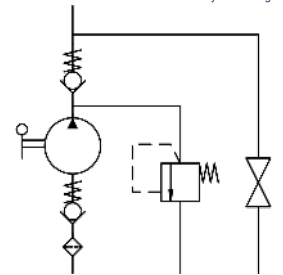


hydraulic diagram

PM 12-25 byB

with release hand knob
with pressure relief valve
double acting hand pump for single acting cylinder
for fixing to tank



Specifications:

- White zinc plated pump body
- Piston protection with Niploy
- White zinc plated support lever
- Lever connection Ø 27
- White zinc plated external parts
- Oil tank mounting kit including
- Pressure relief valve standard setting: 100 bar
- Equipped with non return valve on the outlet port
- Triple sealing system made to prevent any oil leakage and sweating onto the piston rod

DISPLACEMENT cm ³	A mm	B mm	C mm	D °	E °	ACTUAL DISPLACEMENT cm ³	PRESSURE BAR		MASS KG	CODE	CODE WITH BELLOWS
							OPTIMAL	MAX			
12	253	166	34	26	31	12,095	220	380	4,000	6050.5000	
25	273	172	34	30	30	25,280	120	350	4,000	6051.5000	