

POMPE A PISTONI AD ASSE INCLINATO

BENT AXIS PISTON PUMPS

CODICE FAMIGLIA
FAMILY CODE

606-002

"HDS"

Flangia/Flange
Albero/Shaft
Cilin./Displ.

UNI
ISO14 6x21x25
12-17-25-34



| | | | | | |
|---|--|---|----------|---------|------|
| Fluido idraulico Fluid | Minerale o sintetico compatibile con guarnizioni: Mineral or synthetic compatible with the following seals: FKM, FPM, HNBR | | | | |
| Viscosità cinematica consigliata Kinematic viscosity suggested | T media ambiente (°C) Average ambient temp. (°C) | < -40 | -40 ÷ 10 | 10 ÷ 35 | > 35 |
| | VG (cSt = mm ² /s) | 16 | 22 | 32 | 46 |
| Viscosità cinematica ottimale di esercizio Optimale kinematic viscosity | | VG = 10 cSt ÷ 100 cSt | | | |
| Viscosità cinematica max consentita all'avviamento Max kinematic viscosity suggested at the start-up | | VG = 750 cSt | | | |
| Indice di viscosità consigliato Viscosity index suggested | VI > 100 | Temperatura di esercizio Working temperature -15°C ÷ 140°C | | | |
| Grado di filtrazione Oil filtering | | > 200 bar: 10 µm < 200 bar: 25 µm | | | |
| Pres. di aspirazione Inlet pressure | | 0,85 ÷ 2 bar assoluti/absolut | | | |
| Senso di rotazione Pump rotation | | Unidirezionale (Dx o Sx) Unidirectional (Right or Left) | | | |
| Verificare che la pompa sia posizionata almeno 100 mm sotto il livello minimo del serbatoio olio. Prima di avviare la pompa effettuare spurgo aria. Verify that pump is, at least, 100 mm under the minimum level of the tank. Before starting the pump bleed the air. | | | | | |

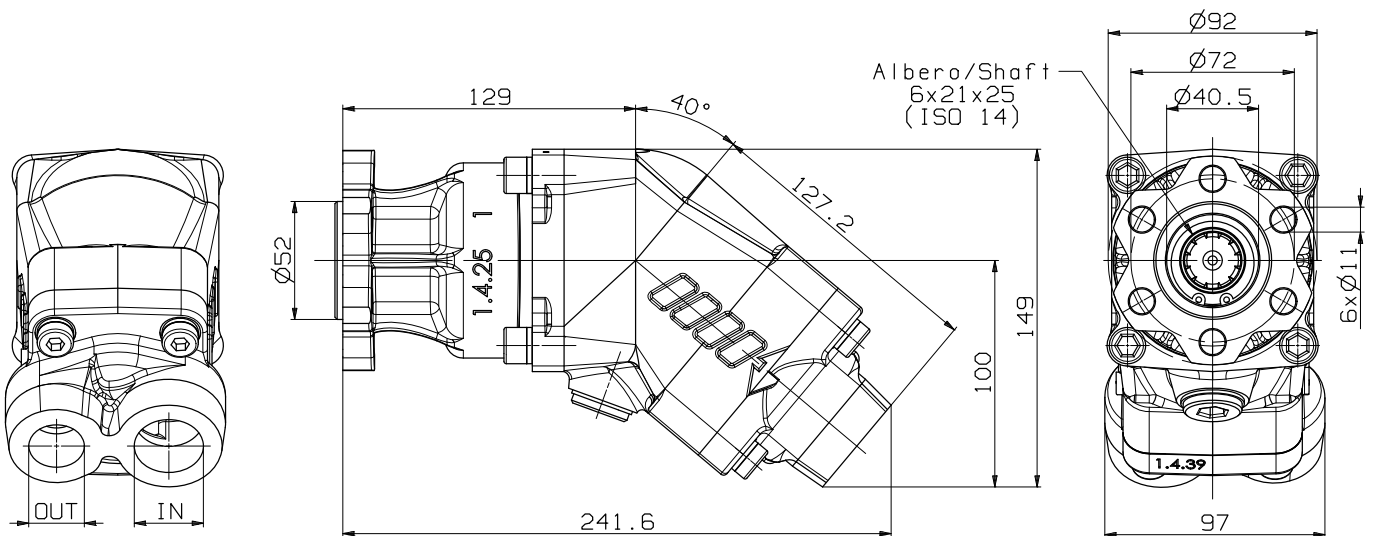
Codice fascicolo: 997-400-60010 Rev: AL

Data: Mercoledì 30 marzo 2016

Rev: //

Codice foglio: 997-606-01505

Dimensions in mm



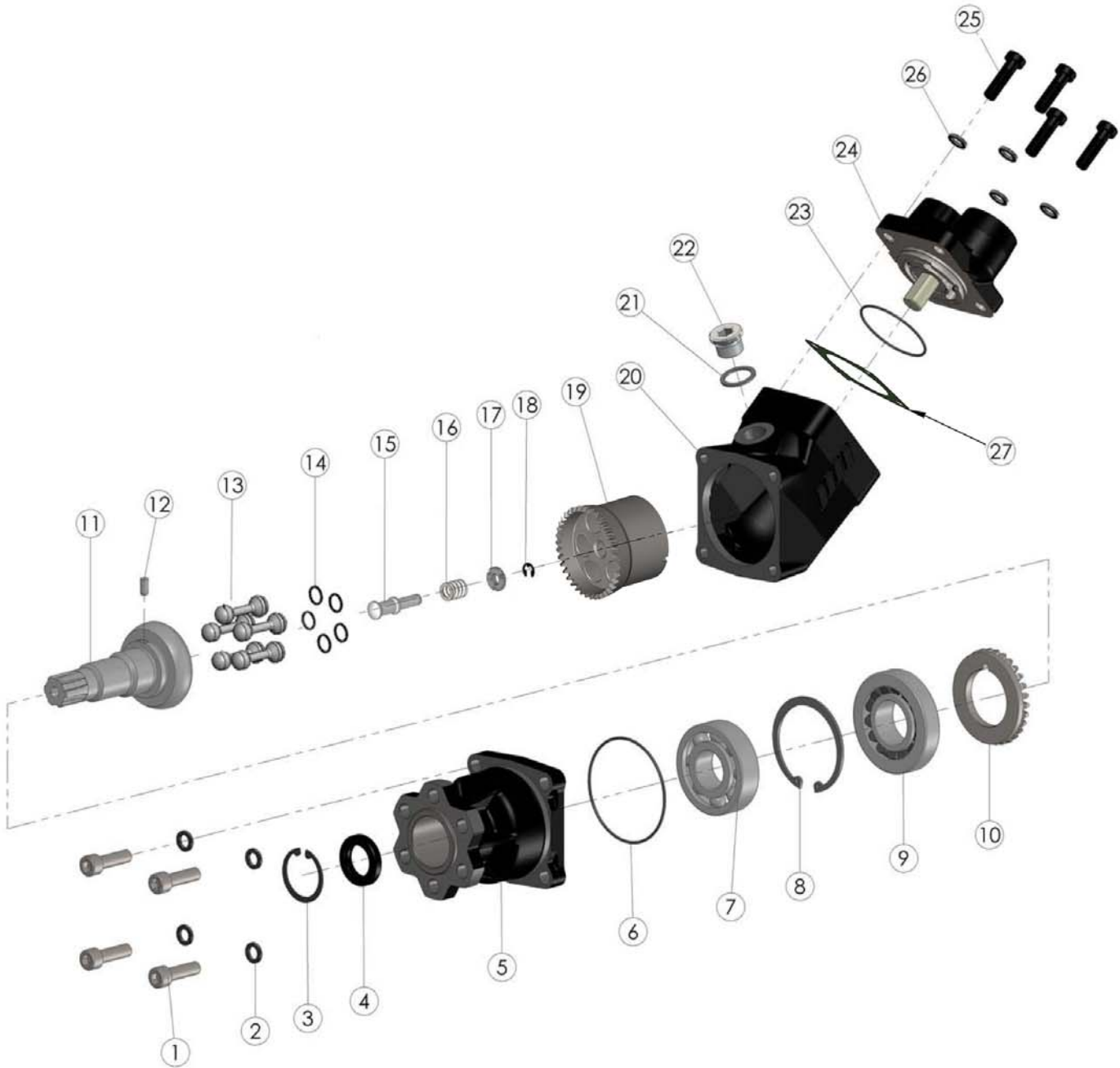
| Tipo pompa Pump type | Rotazione Rotation | | IN ISO 228 | OUT ISO 228 | IN SAE | OUT SAE |
|-------------------------|-----------------------|----------------------|---------------|----------------|-----------|------------|
| | Destra Right | Sinistra Left | | | | |
| HDS-12 | 606-002-10123 | 606-002-10129 | G 1 | G 3/4 | | |
| HDS-17 | 606-002-10173 | 606-002-10179 | | | | |
| HDS-25 | 606-002-10253 | 606-002-10259 | | | | |
| HDS-34 | 606-002-10343 | 606-002-10349 | | | | |

pag. 53

OMFB
HYDRAULIC COMPONENTS

O.M.F.B. S.p.A. Hydraulic Components
We reserve the right to make any changes without notice.
Edition 2016.06 No reproduction, however partial, is permitted.
Via Cave, 7/9 25050 Provaglio d'Iseo (Brescia) Italy Tel.: +39.030.9830611
Fax: +39.030.9839207-208 Internet: www.omfb.it e-mail: info@omfb.it

COMPANY WITH
QUALITY SYSTEM
CERTIFIED BY DNV GL
= IATF 16949 =



pag. 54

COMPANY WITH
QUALITY SYSTEM
CERTIFIED BY DNV GL
= IATF 16949 =

O.M.F.B. S.p.A. Hydraulic Components
We reserve the right to make any changes without notice.
Edition 2016.06 No reproduction, however partial, is permitted.
Via Cove, 7/9 25050 Provedolo d'Isèo (Brescia) Italy Tel.: +39 030.9830611
Fax: +39 030.9839207-208 Internet:www.omfb.it e-mail:info@omfb.it

OMFB
HYDRAULIC COMPONENTS



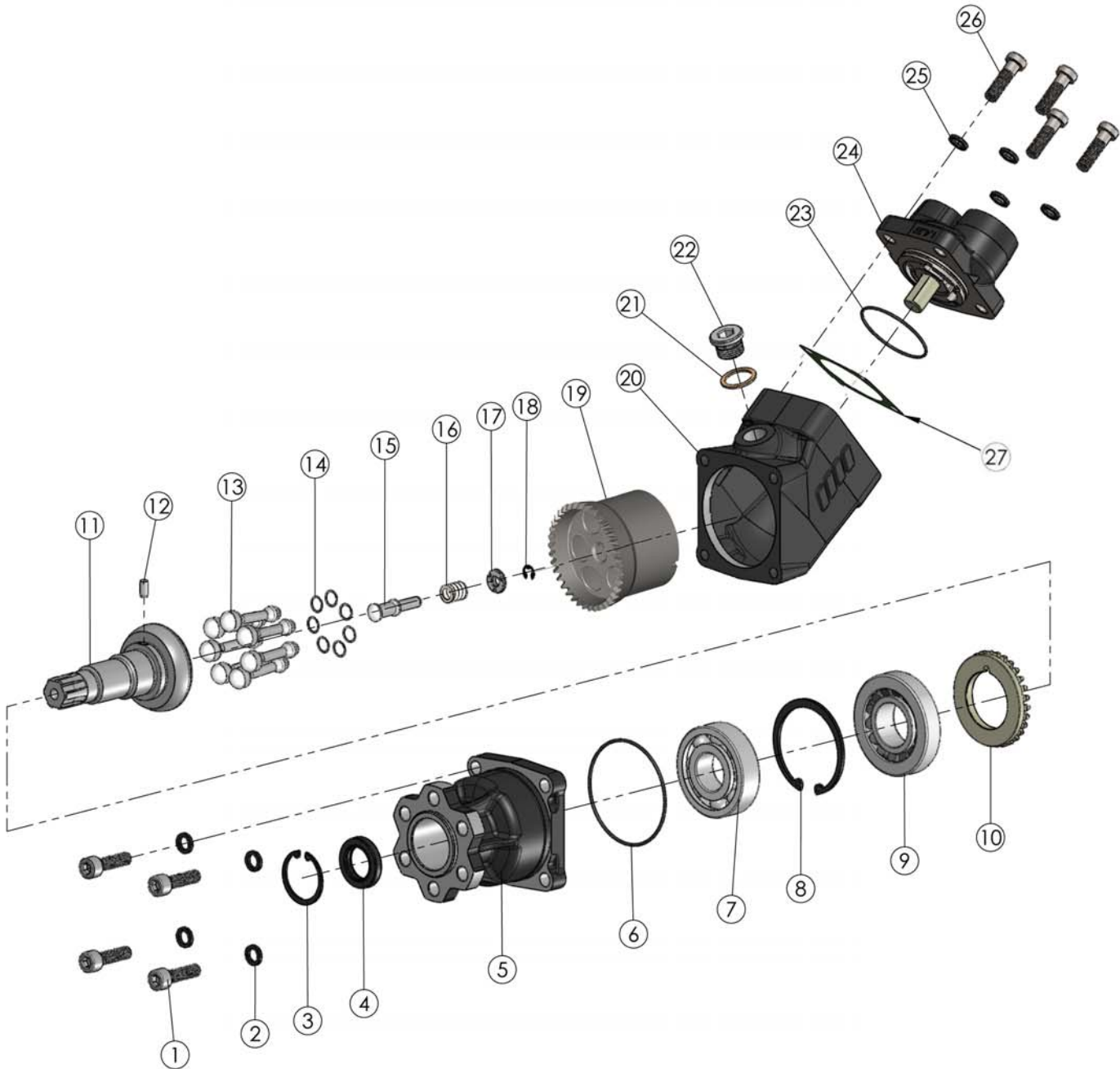
O.M.F.B. S.p.A. Hydraulic Components
 We reserve the right to make any changes without notice.
 Edition 2016.06 No reproduction, however partial, is permitted.
 Via Cove, 719 25050 Povegliano d'Isere (Brescia) Italy Tel.: +39 030 9830611
 Fax: +39 030 9839207-208 Internet:www.omfb.it e-mail:info@omfb.it

pag. 55

COMPANY WITH
 QUALITY SYSTEM
 CERTIFIED BY DNV GL
 = IATF 16949 =

| N° N° | HDS 12 | HDS 17 | Codice P. Number | Descrizione Description | | Quantità Quantity |
|----------|--------|--------|---------------------|------------------------------------|------------------------|----------------------|
| | GAS | GAS | | | | |
| 1 | • | • | 502-004-00565 | Vite TCE M 10x35 | Socket head capscrew | 4 |
| 2 | • | • | 501-008-00054 | Rosetta elastica | Washer | 8 |
| 3 | • | • | 501-001-00373 | Anello elastico | Retaining ring | 1 |
| 4 | • | • | 506-024-25411 | Paraolio | Oil seal | 1 |
| 5 | • | • | 517-002-01181 | Corpo anteriore | Front housing | 1 |
| 6 | • | • | 506-000-18020 | Guarnizione | Gasket | 1 |
| 7 | • | • | 510-001-00221 | Cuscinetto a sfere | Ball bearing | 1 |
| 8 | • | • | 501-001-00677 | Anello seeger | Retaining ring | 1 |
| 9 | • | • | 510-002-00373 | Cuscinetto a rulli conici | Tapered roller bearing | 1 |
| 10 | • | • | 525-011-00264 | Corona dentata | Crown | 1 |
| 11 | • | • | 522-005-00366 | Albero | Shaft | 1 |
| 12 | • | • | 501-003-06142 | Spina UNI 6364 | Pin UNI 6364 | 1 |
| 13 | • | | 532-005-00052 | Pistone sferico | Piston | 5 |
| | | • | 532-005-00061 | | | |
| 14 | • | | 501-023-00073 | Fasce elastiche | Spring rings | 15 |
| | | • | 501-023-00064 | | | |
| 15 | • | • | 542-001-00313 | Perno sferico con guida albero | Shaft guide pin | 1 |
| 16 | • | • | 512-005-01651 | Molla di carico corpo cilindri | Spring | 1 |
| 17 | • | • | 542-001-00322 | Anello guida molla | Spring guide ring | 1 |
| 18 | • | • | 501-015-00046 | Anello seeger | Retaining ring | 1 |
| 19 | • | | 500-029-16012 | Gruppo corpo cilindri sede pistoni | Piston barrel assembly | 1 |
| | | • | 500-029-16017 | | | |
| 20 | • | • | 517-002-00717 | Corpo intermedio | Int. housing | 1 |
| 21 | • | • | 116-009-10129 | Rondella rame | Copper washer | 1 |
| 22 | • | • | 115-006-00135 | Tappo cieco | Blank plug | 1 |
| 23 | • | • | 506-000-12224 | Guarnizione OR | O-ring | 1 |
| 24 | • | | 500-029-80126 | Gruppo corpo posteriore | Rear cover assembly | 1 |
| | | • | 500-029-80171 | | | |
| 25 | • | • | 502-004-00556 | Vite TCE M10x30 | Socket head capscrew | 4 |
| 26 | • | • | 501-020-00101 | Rosetta SCHNORR | SCHNORR Washer | 4 |
| 27 | A | A | 507-000-00256 | Guarnizione piatta | Gasket | 1 |
| | A | A | 507-000-00523 | | | |

A = alternative



| N° N° | HDS 25 GAS | HDS 34 GAS | Codice P. Number | Descrizione Description | | Quantità Quantity |
|----------|---------------|---------------|---------------------|------------------------------------|------------------------|----------------------|
| 1 | • | • | 502-004-00565 | Vite TCE M 10x35 | Socket head capscrew | 4 |
| 2 | • | • | 501-008-00054 | Rosetta elastica | Washer | 4 |
| 3 | • | • | 501-001-00373 | Anello elastico | Retaining ring | 1 |
| 4 | • | • | 506-024-25411 | Paraolio | Oil seal | 1 |
| 5 | • | • | 517-002-01181 | Corpo anteriore | Front housing | 1 |
| 6 | • | • | 506-000-18020 | Guarnizione | Gasket | 1 |
| 7 | • | • | 510-001-00221 | Cuscinetto a sfere | Ball bearing | 1 |
| 8 | • | • | 501-001-00677 | Anello seeger | Retaining ring | 1 |
| 9 | • | • | 510-002-00373 | Cuscinetto a rulli conici | Tapped roller bearing | 1 |
| 10 | • | • | 525-011-00264 | Corona dentata | Crown | 1 |
| 11 | • | • | 522-005-00348 | Albero | Shaft | 1 |
| 12 | • | • | 501-003-06142 | Spina UNI 6364 | Pin UNI 6364 | 1 |
| 13 | • | • | 532-005-00052 | Pistone sferico | Piston | 7 |
| | | | 532-005-00061 | | | |
| 14 | • | • | 501-023-00073 | Fasce elastiche | Spring rings | 21 |
| | | | 501-023-00064 | | | |
| 15 | • | • | 542-001-00162 | Perno sferico con guida albero | Shaft guide pin | 1 |
| 16 | • | • | 512-005-00812 | Molla di carico corpo cilindri | Spring | 1 |
| 17 | • | • | 542-001-00171 | Anello guida molla | Spring guide ring | 1 |
| 18 | • | • | 501-015-00028 | Anello seeger | Retaining ring | 1 |
| 19 | • | • | 500-029-16025 | Gruppo corpo cilindri sede pistoni | Piston barrel assembly | 1 |
| | | | 500-029-16034 | | | |
| 20 | • | • | 517-002-00717 | Corpo intermedio | Int. housing | 1 |
| 21 | • | • | 116-009-10129 | Rondella rame | Copper washer | 1 |
| 22 | • | • | 115-006-00135 | Tappo cieco | Blank plug | 1 |
| 23 | • | • | 506-000-12224 | Guarnizione OR | O-ring | 1 |
| 24 | • | • | 500-029-80251 | Gruppo corpo posteriore | Rear cover assembly | 1 |
| | | | 500-029-80340 | | | |
| 25 | • | • | 501-020-00101 | Rosetta SCHNORR | SCHNORR Washer | 4 |
| 26 | • | • | 502-004-00556 | Vite TCE M10x30 | Socket head capscrew | 4 |
| 27 | A | A | 507-000-00256 | Guarnizione piatta | Gasket | 1 |
| | A | A | 507-000-00523 | | | |

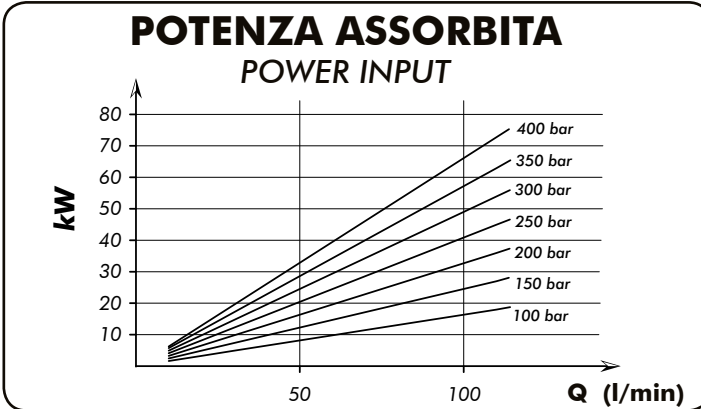
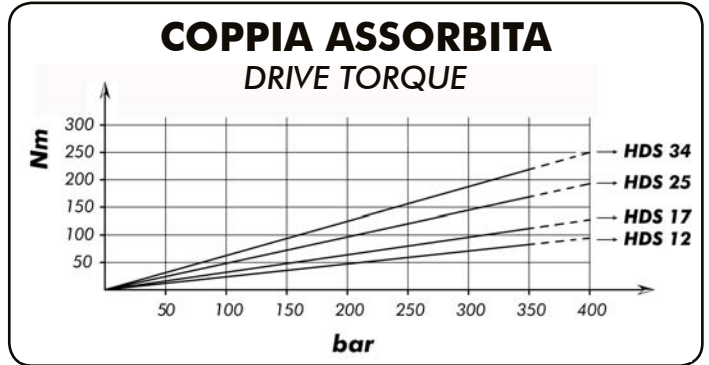
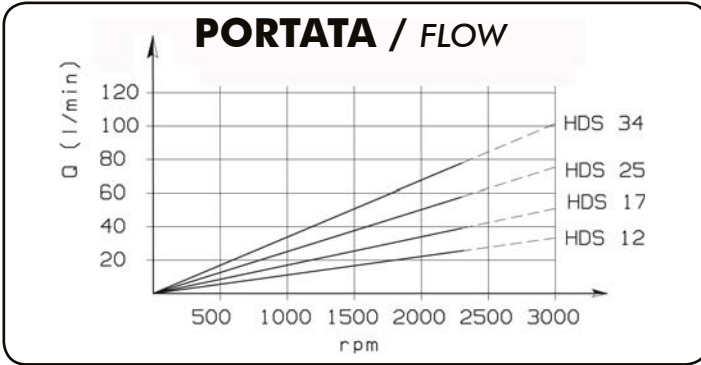
A = alternative

CARATTERISTICHE TECNICHE DI FUNZIONAMENTO / TECHNICAL FEATURES

| Tipo pompa Pump type | Cilindrata Displacement cm ³ /rev | Pressione Pressure | | Velocità / Speed | | | Velocità min. Min. speed rpm | Peso Weight kg |
|-------------------------|--|-----------------------|-----------|------------------|-----------|-----------|------------------------------------|----------------------|
| | | P1 bar | P3 bar | V0 rpm | V1 rpm | V2 rpm | | |
| HDS-12 | 12.62 | 350 | 400 | 3000 | 2300 | 3000 | 300 | 8,3 |
| HDS-17 | 16.98 | | | | | | | 8,3 |
| HDS-25 | 25.12 | | | | | | | 8,4 |
| HDS-34 | 33.80 | | | | | | | 8,3 |

P1=Pressione massima continua Max. continuous pressure (100%)
P3=Pressione massima di punta Max. peak pressure (6 sec.max)

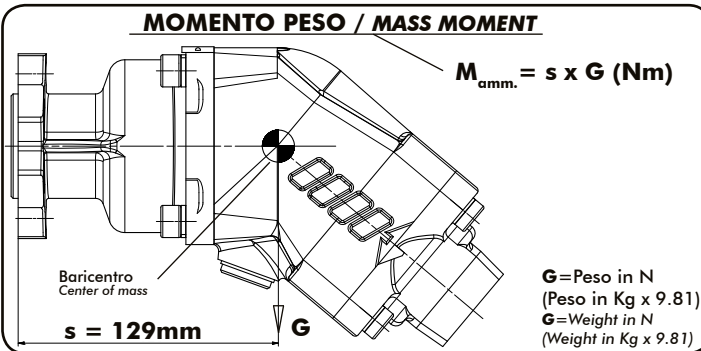
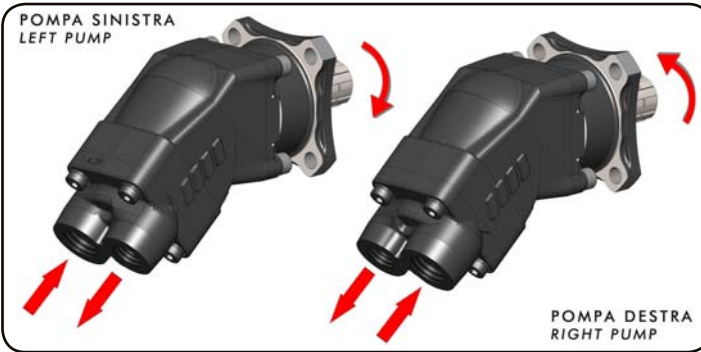
V0=Massima continua vuoto Max. continuous speed without load
V1=Massima continua Max. continuous speed
V2=Massima intermittente Max. intermittent speed



SCELTA DEL TUBO DI ASPIRAZIONE HOW TO CHOOSE THE SUCTION PIPE SIZE

| Q Portata Flow l/min | Ø interno min. tubo Min pipe diam. mm | inch | Velocità flusso Flow speed (m/s) |
|----------------------------|---|---------|--|
| 20 | 25 | 1" | 0,68 |
| 30 | 32 | 1" 1/4 | 0,62 |
| 40 | 32 | | 0,83 |
| 50 | 38 | 1" 1/2 | 0,74 |
| 60 | 38 | | 0,88 |
| 70 | 40 | 1" 9/16 | 0,93 |
| 80 | 45 | 1" 3/4 | 0,84 |
| 90 | 45 | | 0,94 |
| 100 | 50 | 2" | 0,85 |
| 110 | 50 | | 0,93 |
| 120 | 60 | 2" 3/8 | 0,71 |
| 130 | 60 | | 0,77 |
| 140 | 60 | | 0,83 |
| 150 | 60 | | 0,88 |
| 160 | 63 | 2" 1/2 | 0,86 |
| 170 | 63 | | 0,91 |
| 180 | 63 | | 0,96 |

Per garantire corrette condizioni di aspirazione la velocità del flusso non deve superare 1 m/sec.
To ensure the proper suction pipe size the flow speed should not exceed 1mt/sec.



Kit guarnizioni / Seal Kit
GAS 108-903-26349